



Australian Hammer Supplies Hire
Unit 3/32 Williamson Road
Ingleburn
NSW 2565

Minor Service

RP041278

Customer

AUSTRALIAN HAMMER SUPPLIES HIRE

Resource

Reid Lewis

Contact

Address

Australian Hammer Supplies Hire Pty Ltd
32 Williamson Road

Ingleburn
NSW 2565

Job Type

Minor Service

Reference

Date

2024-06-14 14:07 - 14:55

Job duration

2:0:00

Driving duration

00:00:00

Distance travelled

0 km

Notes

1750HR MINOR SERVICE

Customer/Technician

Resource notes



Minor Service		
	Answer	Notes
Additional notes	none	
Change fuel filter	yes	
Change gear oil (litres used)	0	
Change oil filter	yes	
Change outer air filter	yes	
Check hand controls operational	Yes	
Check slew (full travel and smooth operation)	Yes	
Check the hydraulic motor and the control block for oil leaks.	Yes	
Foot pedals (operate correctly)	Yes	
Gauges (operate correctly)	Yes	



Australian Hammer Supplies Hire
Unit 3/32 Williamson Road
Ingleburn
NSW 2565

General check/adjust driver belts	Yes
General inspections/safety checks	all good
General inspections/safety checks	all good
Grease & Lubricate Pins & bushes	Yes
Grease all nipples	yes
Hand controls (operate correctly)	Yes
Handbrake (functional)	na
Inspect track tension	okay
Inspect/top up coolant (litres used)	0
Meter Reading	1717.9
Operational inspection controls and safety locks Air conditioner/heater	Yes
Operational inspection controls and safety locks Attachment controls	Yes
Operational inspection controls and safety locks Battery charger rate	Yes
Operational inspection controls and safety locks Engine shut off	Yes
Operational inspection controls and safety locks Engine speed high	Yes
Operational inspection controls and safety locks Engine speed low idle	Yes
Operational inspection controls and safety locks E-STOPS	Yes
Operational inspection controls and safety locks Flow test hyd system(Ref. WSM)	Yes
Operational inspection controls and safety locks Horn hazard & warning devices	Yes
Operational inspection controls and safety locks Hour & tachometer	Yes
Operational inspection controls and safety locks Hydraulic auxiliary operation	Yes
Operational inspection controls and safety locks Instruments & Gauges	Yes
Operational inspection controls and safety locks Lights - Interior	Yes
Operational inspection controls and safety locks- Lights head,signal, stop & work	Yes
Operational inspection controls and safety locks Lights-warning	Yes
Operational inspection controls and safety locks	Yes



Australian Hammer Supplies Hire
Unit 3/32 Williamson Road
Ingleburn
NSW 2565

Main relief pressure check: PSI =

Operational inspection controls and safety locks	No	Yes
coolant leaks		

Operational inspection controls and safety locks	No	Yes
exhaust leaks		

Operational inspection controls and safety locks	No	Yes
fuel system leaks		

Operational inspection controls and safety locks	No	Yes
oil leaks		

Operational inspection controls and safety locks	Yes
Quick hitch	

Operational inspection controls and safety locks	Yes
Safety interlock function	

Operational inspection controls and safety locks	Yes
Seat belt operation & mounting	

Operational inspection controls and safety locks	Yes
Set clock & audio system	

Operational inspection controls and safety locks	Yes
Set service intervals	

Operational inspection controls and safety locks-	Yes
Switches & controls	

Operational inspection controls and safety locks	Yes
Verify relief valve setting (attach)	

Operational inspection controls and safety locks	Yes
Windscreen wipers & washers	

Pre cleaner, cabin filter and outer air filter take out and blow out - Actioned?	Yes
--	-----

Tracks check/adjust track tension	Yes
-----------------------------------	-----



Australian Hammer Supplies Hire
Unit 3/32 Williamson Road
Ingleburn
NSW 2565

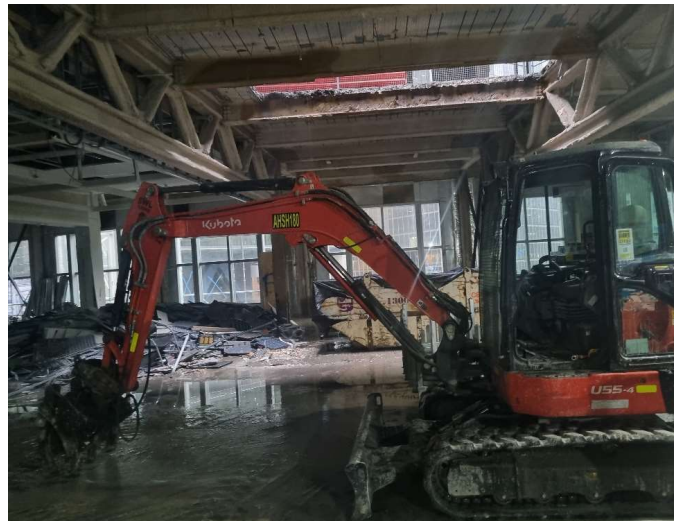
Plant No.



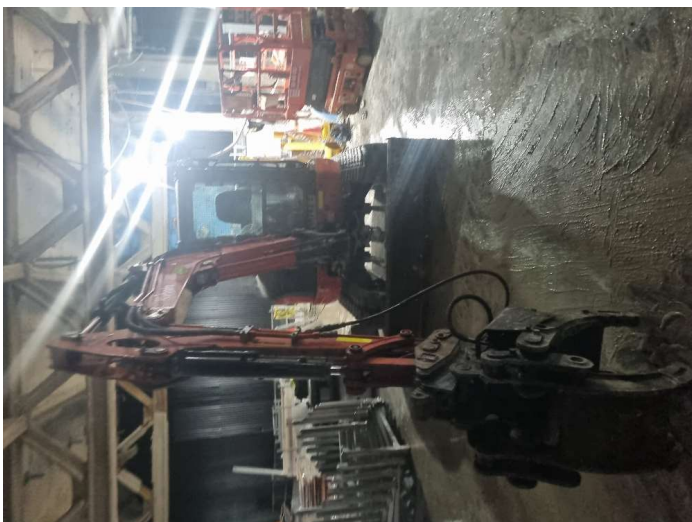
Overall View - Right hand side



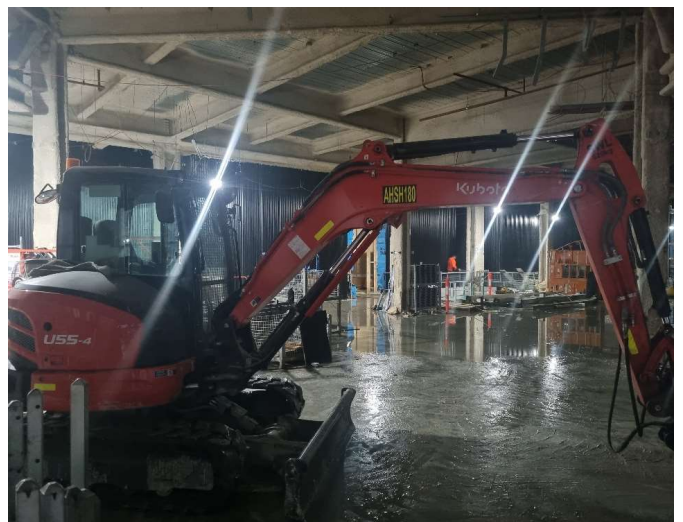
Tyre Condition 1



Tyre Condition 2



Tyre Condition 3





Australian Hammer Supplies Hire
Unit 3/32 Williamson Road
Ingleburn
NSW 2565

Tyre Condition 4

